

WORLEY FIRE PROTECTION DISTRICT

EMPLOYMENT OPPORTUNITY



FIRE CHIEF

Excellent Benefits

Work at Beautiful Coeur d' Alene Lake

Coeur d' Alene, Idaho





OUR COMMUNITY

Worley Fire District is located 20 miles South of Coeur d'Alene Idaho. Downtown Coeur d'Alene was founded in 1888, is a lively area, offering you more than 100 shops and restaurants. Lake Coeur d'Alene is the second largest in Northern Idaho with unparalleled natural beauty.

Our area has many wonderful things to offer the outdoor enthusiast. The finest outdoor recreational opportunities are plentiful and include boating, hunting, fishing, camping, winter skiing, snowmobiling, cycling, hiking, horseback riding and golfing.

Heyburn State Park is the oldest park in the Pacific Northwest. Created in 1908, it is comprised of approximately 5,500 acres of land and 2,300 acres of water. The park includes three lakes; Chatcolet, Benewah, and Hidden Lakes, with the shadowy St. Joe River meandering along the eastern boundary of the park.

The Coeur d'Alene Centennial Trail extends for 23 miles from Lake Coeur d'Alene to the Washington State line. It is paved, scenic, and well-maintained.

The Trail of the Coeur d'Alene extends from Mullan in Shoshone County to Plummer in Benewah County, just a few miles south of the Worley Fire District border.

These are just a few of the things our community has to offer you. Please come explore and enjoy.

THE DISTRICT

Worley Fire Protection District was formed from a “grassroots citizen movement” in 1969.

This movement came from the desire of the citizenry to have access to timely fire protection year around throughout the community. Worley Fire Protection District covers approximately the southern one-third of Kootenai County or 121 square miles.

As with the majority of modern-day fire departments, Worley Fire District also provides Emergency Medical Transport Services at the Basic Life Support level which is approximately 85 percent of our call volume. This is performed under the direction and licensure of Kootenai County Emergency Medical Services.

The District serves the City of Worley, an exclusive golf facility complex, The Coeur d Alene Casino, Hotel and Golf Course as well as the communities of Conklin Park, Cave Bay, Windy Bay, Sun-Up Bay, Rockford Bay, several Residential Developments plus Rural/Agricultural, and Timber Lands. Worley Fire District has reciprocal mutual-aid and automatic-aid agreements with all fire agencies in Kootenai County as well as bordering agencies in Benewah County and Spokane County.

A population of approximately 3500 year around citizens is served. Staffed by one full-time Chief, one Administrative Assistant, three full-time Lieutenants, three full-time Fire-fighter/EMT and several volunteers to staff 17 pieces of equipment out of 5 Stations.

The WFPD is governed by an elected 3-member Board of Commissioners that provide leadership for the Fire Chief and the Fire District.



THE POSITION

This is a highly responsible administrative and management position involved in the direction of all employees, activities, and programs of the Worley Fire District, under the direction of the Board of Commissioners.

The position involves extensive collaboration with state partners, automatic-aid and mutual aid agreements.

The work includes emergency responses of both a medical and firefighting nature. This includes the ability to perform firefighting and medical response activities when the need arises.

Necessary Additional Knowledge & Skills:

- * Computer skills - proficient in the use of common MS Office programs including Word, Excel and PowerPoint. Able to produce reliable and defensible reports for a variety of purposes and presentations.
- * Develop and administer a budget and take a proactive leadership role in securing funding.
- * Interpret and apply federal, state and local policies, procedures, laws and regulations.
- * Able to negotiate and communicate with the local union.
- * Provide for the recruiting, retaining, training, and motivating of District volunteers.
- * Establish and maintain effective working relationships with those contacted in the course of work including the Fire District Board, Fire District Career and Volunteer members, cities, counties, and other governmental officials and agencies, community groups, private businesses, and the public.
- * Allocate resources in a cost effective manner.
- * Develop, implement and administer short & long range goals, objectives and procedures for providing effective and efficient fire prevention, fire suppression, and emergency medical services.
- * Assure that proper fire and life safety standards are maintained; assures work of department is carried out properly and effectively.
- * Prepare reports and correspondence as required by the work in the department.
- * Assure fire training of all Fire District personnel, schedule drills to meet NFPA and NIMS requirements for initial certification and continuing education.



QUALIFICATIONS

MINIMUM REQUIREMENTS

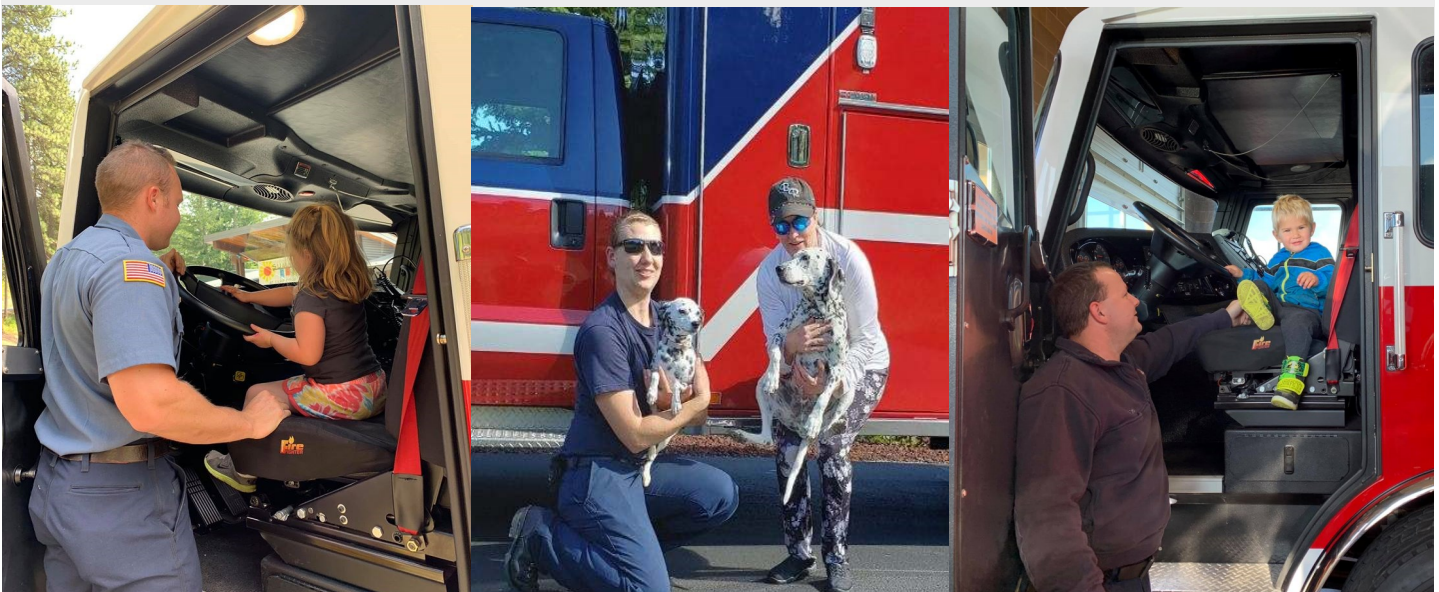
- ◆ Bachelor's degree in Fire Science or related field; equivalencies accepted
- ◆ Minimum of ten (10) years of related experience as a chief officer.
- ◆ Leadership experience in collective bargaining with unions desired.
- ◆ Pass a criminal background check.
- ◆ Must reside within thirty (30) minutes of the District's jurisdictional boundary within Six (6) months from the date of hire. (preferably live within district)
- ◆ The ability to acquire a valid driver's license in state of residency within six (6) months.
- ◆ Certified Fire Officer.
- ◆ Must be NFPA Instructor certified or equivalent.
- ◆ The District reserves the right to determine equivalencies, if any, of acceptable experience and training.





COMPENSATION

- Annual Salary: \$80,000 - \$90,000 (DOQ - FLSA Exempt)
- 100% Medical, Dental & Vision insurance currently provided by the District
- Employer Retirement Contribution (PERSI)
- Vacation Leave Accrual
- Sick Leave Accrual
- Life Flight Membership
- NCPERS Term Life Insurance
- District Vehicle
- Cell Phone





HOW TO *EXPRESS* *INTEREST*

APPLICATION DEADLINE

- Submit your application, resume and cover letter to Worley Fire District, 31541 S Highway 95, Worley, ID 83876 before **October 14, 2021 by 4:00 p.m.**
- **EMAIL APPLICATIONS WILL NOT BE ACCEPTED**
- Timeline will follow.

Equal Opportunity Employer: Because Worley Fire Protection District values diversity in the workplace, people of all ethnic backgrounds, persons with disabilities, and veterans are encouraged to apply. In accordance with the Americans with Disabilities Act, reasonable accommodation for persons with disabilities will be provided, if requested. Please notify the District about the accommodation needed, preferably at the time of application, but at least two days prior to the date needed.

Application packet at worleyfire.com

